



ED NESTOR MEMORIAL Backstop Palooza

9th Annual Ed Nestor Memorial Backstoppalooza Concert

The Ed Nestor Memorial Backstoppalooza is a fundraiser concert that supports Backstoppers, Inc., an organization that provides immediate financial aid and other support to the families of police officers and firefighters who lose their lives in the line of duty.

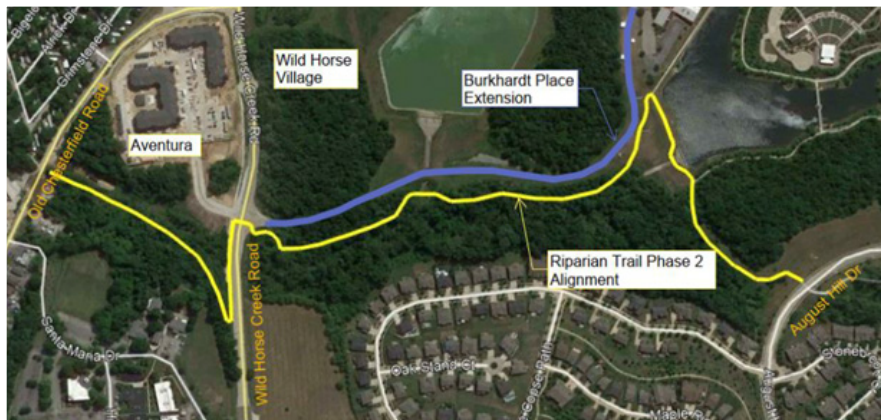
The annual Backstoppalooza fundraiser concert will be held on Saturday, August 21, 2021 at the Chesterfield Amphitheater. All of the proceeds from Backstoppalooza supports Backstoppers. Donations to Backstoppers will be encouraged and collected at the event. Backstoppalooza has raised over \$368,000 for Backstoppers, Inc. since 2013! This year's performance is *Billy the Kid* who performs classic early Billy Joel in an authentic, all-live rock show.

For more information, please contact Captain Mike Thompson at BPalooza@chesterfield.mo.us or visit <https://www.chesterfield.mo.us/backstoppalooza.html>.



Riparian Trail Extension

Later this year the City of Chesterfield will commence construction on Phases 2 and 3 of the Riparian Trail. The Riparian Trail extension will begin at August Hill Drive, head north through Central Park, cross Wild Horse Creek Road, and terminate at Old Chesterfield Road. This one-mile trail extension will be funded through a federal grant known as the Transportation Alternatives Program (TAP), with supplemental funding from the Chesterfield Valley Transportation Development District. Construction of the Riparian Trail extension should be completed by the Spring of 2022.



Mayor

Bob Nation

636.537.4711

bnation@chesterfield.mo.us

Term Expires April 2025

Council Members

Ward I

Mary Monachella- 636.579.9030

mmonachella@chesterfield.mo.us

Term Expires: April 2022

Barbara McGuinness- 314.434.7326

bmcguinness@chesterfield.mo.us

Term Expires: April 2023

Ward II

Mary Ann Mastorakos- 636.532.3222

mmastorakos@chesterfield.mo.us

Term Expires: April 2022

Aaron Wahl- 314.681.8521

awahl@chesterfield.mo.us

Term Expires: April 2023

Ward III

Michael Moore- 314.378.7142

mmoore@chesterfield.mo.us

Term Expires: April 2022

Dan Hurt- 636.532.2035

dhurt@chesterfield.mo.us

Term Expires: April 2023

Ward IV

Tom DeCampi- 636.530.0982

tdecampi@chesterfield.mo.us

Term Expires: April 2022

Gary Budoor- 636.410.0259

gbudoor@chesterfield.mo.us

Term Expires: April 2023

City Administrator

Mike O. Geisel- 636.537.4711

cityadministrator@chesterfield.mo.us

Chesterfield Citizen Editor/Layout Design

Casey Link

communications@chesterfield.mo.us

Paid for and published four times a year by the City of Chesterfield, Bob Nation, Mayor.

Chesterfield City Hall
690 Chesterfield Parkway West
Chesterfield, MO 63017-0670
636.537.4000
info@chesterfield.mo.us

Mayor's Message



Looking ahead to a new year and putting COVID-19 further behind us (we hope!), I'm sure that like me, most of you are happy to enjoy many of the things that had been taken for granted.

I will touch on some of the bigger things that are affecting Chesterfield, the first of which is the passage of Senate Bill 153, otherwise known as "Wayfair" legislation. Governor Parson signed this bill, which would take effect in 2023, with the provision that local ballots are passed that would authorize collection of a use/internet sales tax on county-wide as well as local (municipal) taxes. As it has been said before, this is not a new tax or a tax increase, but merely an attempt to recoup revenue streams that previously existed before on-line shopping became so prevalent. Many also view this as leveling the playing field for brick and mortar retailers versus their e-commerce counterparts.

I understand that the Metropolitan St. Louis Municipal League will work with the Missouri Municipal League and St. Louis County to put forth an educational campaign preceding an April 2022 ballot. There likely will be two ballot issues, one applicable to the county-wide taxes and one for the municipal portions.

With multiple development projects underway in Chesterfield, we sometimes hear questions and complaints that the city is allowing too much development that removes so many trees and approves too many high density multi-family owner and non-owner occupied residential units. It may even seem as though the City

is encouraging development as fast as possible. I would like to assure our residents that this is not the case. We believe development should occur at its own pace without incentives that would tend to accelerate the natural pace of development.

The City's comprehensive plan, which has recently been updated (with significant input from the public), serves as a guide for the types and density of development that can be expected in various sectors of the City. Any property owner has the legal right to a reasonable zoning and use of his/her property that is consistent with the comprehensive plan and meets all of the requirements within the Unified Development Code.

Although we may consider Chesterfield as one of many suburbs in the metropolitan St. Louis area, in reality, we are our own urban development responsible for providing high caliber services to our residents and businesses. One of the "givens" of urban development is that a higher density of development is not only allowed, but encouraged in and around the central part of our City. The increased density allows for economies of scale as well as economic efficiency in order to generate revenue to pay for services across the spectrum. Having stated the necessity/desirability of allowing higher density development in certain areas, we remain committed to protecting the character and integrity of our residential

Continued On Next Page...



neighborhoods by adhering to compatible zoning standards. These standards are interwoven in our development code and comprehensive plan. I hope the foregoing helps alleviate the concerns that some have expressed.

I hope to see you out and about.
Cordially,

Bob Nation



Safety Town Returns

This summer marked the return of in-person Safety Town! Last year we had to cancel our most popular community program due to the pandemic, and instead, created an online version for children and parents to utilize while at home. It was a good substitute, but in-person class is much more effective for the children. Plus, the volunteers and instructors really missed all of the smiling faces!

Safety Town is a nationally recognized preschool safety program which teaches 4 to 6-year-olds about a wide variety of safety issues, including 911/police, fire safety, animal safety, bicycle safety, water safety, school bus safety, playground safety, and stranger danger. The program includes classroom activities, as well as hands-on activities both outside and in the miniature Safety Town city. It is a wonderful program that really benefits the young children and we are so very glad to be back!

Fifth Annual Subdivision Trustee Symposium

Calling all subdivision trustees! The City is hosting its fifth annual symposium for subdivision trustees to help you better serve your neighborhood. We will arm you with information you can use to help during your term as a trustee. City department heads will present information on services you may not be aware of that are provided by all areas of the operation and a manual will be provided as well.

Some of the topic areas include:

- Police – Vacation checks for homeowners, speakers on a variety of topics such as home safety and identity theft at your subdivision meetings, deer hunting, Neighborhood Watch programs and code enforcement.
- Public Works – sewer lateral program, street tree program, sidewalk and street repair/replacement and snow removal programs.

- Planning & Development Services – the permit process for decks or home remodeling/additions, planner of the day and how to look up development projects.

- Parks – Programs available including: older adult programs, how to search for events, activities and amenities of our parks.

The City's website contains a great deal of information that can sometimes be challenging to navigate. We will show you the basics and how to easily find the most searched for information.

This information-packed event will be held on Wednesday, September 29 from 6-7:30 p.m. at City Hall in Council Chambers. No registration required.



Driveway Apron Snow Removal Program

The City of Chesterfield’s Driveway Apron Snow Removal Program offers removal of the windrow of snow which accumulates at the end of your driveway when the City clears snow from the public streets.

In order to be considered for this service, an applicant must be an:

- Individual who resides in a single family residential property accessed from a public street.
- Individual who resides within the corporate City limits of Chesterfield.
- Individual that is unable to perform snow removal activities as determined by a physician.

Applicants MUST complete the packet, which can be found at <https://www.chesterfield.mo.us/resident-windrow-program.html>, or picked up at City Hall, and return it to the City of Chesterfield, 690 Chesterfield Parkway West, Chesterfield, MO 63017 in person or by mail. If you have previously registered for this program, there is no need to re-apply.

City crews will ONLY begin clearing the windrows on driveways after they have completed the snow removal on all public streets and at public facilities. Please note that the intent of this program is not to remove snow from your entire driveway. This service is only available to qualified resident owners with a certified medical need or disability. Please allow two weeks for application review and processing. City Hall hours are 8:30 a.m. to 5:00 p.m. Monday through Friday.

If you have questions, please call the City of Chesterfield’s Department of Public Works at 636.537.4762.



Competitive Butterfly Garden Kit Grant

The Butterfly House/MO Botanical Garden was awarded one of five competitive grants for 32 native flowering plants supportive of the diversity of pollinators, especially the Monarch Butterfly, to the Chesterfield Citizens for the Environment Advisory Committee (CCEAC). These native



florae included: Columbine, Ohio Horsemint, Cardinal Flower, Bee Balm, Slender Mountain Mint, Golden Alexander, Blue Star and Purple Coneflower. Having the distinction of being the first National Wildlife Federation (NWF) Certified Schoolyard Habitat with Chesterfield’s NWF Certified Community Wildlife Habitat, The Butterfly House/MO Botanical Garden now partners with the CCEAC for Project Pollinator. The Butterfly Garden Kit plants were added to those in a Boy Scout’s Eagle Project, a pollinator garden north of our Parks HQ, in May for “Garden for Wildlife Month!” CCEAC Members weeded the garden, planted the native flora, and helped to make this garden ready for Monarch Butterflies to come!

Water Quality

Did you know that in order to permit grading and land disturbance activities, the City of Chesterfield, along with 58 other municipalities, St. Louis County, and MSD, operate under a Municipal Separate Storm Sewer System (MS4) permit from the Missouri Department of Natural Resources? Permit requirements cover a wide range of topics which impact water quality, including posting pet waste disposal signs, ensuring that development sites contain proper silt and erosion control, and bi-annual street sweeping. Additionally, the City must operate its facilities in such a manner to minimize exposure to storm water and train its personnel annually in proper water quality practices.

If you are wondering what you can do regarding water quality, please remember that all storm water inlets drain to creeks and streams. Please ensure that no trash, debris, or chemicals are washed or dumped into storm water inlets. Additionally, if you are planning a grading project, please contact the City to determine whether a permit is necessary at 636.537.4000.



Clarkson Valley Police Unit

At the Tuesday, June 1, 2021 meeting of the Clarkson Valley City Council, Mayor Scott Douglass honored the six members of the Chesterfield Police Department's Clarkson Valley Police Unit. For the past four years, the City of Clarkson Valley has contracted with the City of Chesterfield to designate six permanent police officers who provide 24/7 police protection to the Clarkson Valley Community. Each of these officers were presented with the Clarkson Valley "Mayor's Award of Excellence." The Award was conferred for their continuous and noble service throughout

the past year. On behalf of the City Council, Mayor Douglass expressed his appreciation for the manner in which each officer consistently dedicated themselves to noble service. The Award read in part: "We, as private citizens, have hunkered down and weathered the storm, often from the comfort of our homes. During that same time period, you have remained at the ready, demonstrating bravery as you seamlessly and selflessly provided continuous services to our residents in spite of the constant threats associated with the COVID-19 Pandemic." Congratulations to these fine officers!



L to R: Officer Craig Friemel, Officer Kim Beckmann, Officer Michelle Hrivnak, Clarkson Valley Mayor Scott Douglass, Officer Chris Pollman, Officer Ken Quach, and Officer Don Schlemmer.





Traffic Studies

You may have periodically noticed small devices on the roads in the City of Chesterfield. These are portable traffic analyzer sensors that are used to collect short-term traffic data to be analyzed as part of a traffic study.

These devices collect information by utilizing a magnetic sensor to detect vehicle count, speed, and vehicle classification (cars, trucks, buses, etc.).

The sensors are placed in a protective cover and then placed and secured in the traffic lanes with screws. They are typically installed on Mondays and retrieved on Fridays with a collection period from Tuesday through Thursday. Data extracted from the sensors is utilized for in-house review of speed, volumes, peak hours, and vehicle type. We try to ensure that all traffic counts are five years old or less with a high concentration on collector and arterial roadways. We also collect data at particular locations based upon requests from the Public Works or Police Departments.



Subdivision Trustees Update

The City of Chesterfield continuously updates its comprehensive list of Subdivision Trustees. Trustees are provided notices of public hearings and upcoming projects that affect their subdivision. Recently adopted ordinances and resolutions which may be of interest to residents are also provided.

Please be advised that Trustee information is public information and is routinely provided as a public service by the City to anyone requesting this information.

If you are a new Trustee or know of any changes in your subdivision, please download the "Trustee Information Form" on the City's homepage, at www.chesterfield.mo.us.

1. Select "Residents," "Subdivision Trustees," then "Subdivision Trustee Information Form"
2. Complete the form and return via mail, fax or email as directed.

You may contact the Customer Service Center at 636.537.4000 if you would like a "Trustee Information Form" sent to you.



Chesterfield Police Honor Veterans at Friendship Village

On May 31, the Chesterfield Police Department had the honor of celebrating Memorial Day with the citizens of Friendship Village. The special guest for the ceremony was World War II and Korean War Veteran, Gunnery Sergeant Bob Summers who is a resident there.



“Gunny” first joined the Navy Seabees at age 16 ½, and deployed throughout the Pacific theater during the war. After World War II ended, Gunny left the service, but soon joined the Marine Corp. and fought in Korea during that conflict. A true living legend, we were humbled to be with Gunny as we remembered those who made the ultimate sacrifice on behalf of this great nation. CPD thanks all active military and our veterans for their sacrifices.

Trucks and Treats



October 9
Central Park
10-2 p.m.

America Recycles Day



November 6
Chesterfield Mall
9-12 p.m.

Turkey Trot



November 25
8:30 a.m. 5K Run/Walk
9:30 a.m. Fun Run

*For additional information please visit the website: www.chesterfield.mo.us

Street Lights

The City of Chesterfield includes 183 miles of public streets. The majority of those streets contain streetlights funded by the subdivision and maintained by Ameren Missouri. Streetlight outages can be reported directly to Ameren by calling 1.800.552.7583. When reporting the light outage you will need the specific address and the streetlight number located on the light. If a light is not maintained by Ameren, or if you encounter problems when trying to get a streetlight repaired, please contact the City of Chesterfield (636.537.4000) or use the “Report a Problem” function on the City’s website.





Native Bees Need Your Help

'Raising nonnative honey bees does not "save the bees," and may harm them according to naturalists at the National Wildlife Federation' (National Wildlife, 6/7/21). "Honey bees, not native to North America, are like chickens, cattle and other livestock and are domesticated animals. Keeping honey bees is 'not wildlife conservation,'" according to NWF Naturalist David Mizejewski. Modern agriculture in the 1930's displaced native habitats of crop-fertilizing native pollinators.

Today you can box up honey bees and move them around the country to pollinate crops which is not sustainable like our local honey beekeeping expert, Ted Jansen, now deceased, explained. He had to 'detox' his honey bees upon returning home regarding pesticides, parasites, and "colony collapse disorder." He explained he'd lost roughly 40% of his honey bees which is what the Bee Information Partnership tells us about transported honey bees.

North America's native bees are in trouble. They are unlike honey bees because they live alone in nests carved into soil, wood or hollow plant stems and rarely sting. The International Union for Conservation of Nature (IUCN - 2015) indicated 28% of North America's 47 Bumble bee species face some level of extinction. Bumble bees are commercially valuable too because they help to pollinate crops like berries, tomatoes, and peppers. Pesticides, disease, habitat loss, and climate change, all contribute to native bee decline. Scientists suggest competition with honey bees may also play a role (Conservation Letters 2017, National Wildlife, 6/7/21).

You can help by growing a diversity of flowering native plants that bloom throughout the seasons; leaving bare patches of soil, fallen logs/branches, and dead trees; letting plant stems stand through the winter; and, by never using pesticides.

Chesterfield Police Department
MAKE THE RIGHT CALL

911

EMERGENCY

- Medical or fire emergency
- Danger to life
- Crimes in progress

(636)537-3000

NON-EMERGENCY

- Records/Police Reports
- General Information
- Contact a staff member



Prevent Catalytic Converter Theft

What is it?

- It is a critical component of a car's exhaust system and can cost thousands of dollars to replace.
- Thieves target it because it contains expensive metals, that can then be sold as scrap.
- Removal can take less than 1 minute.

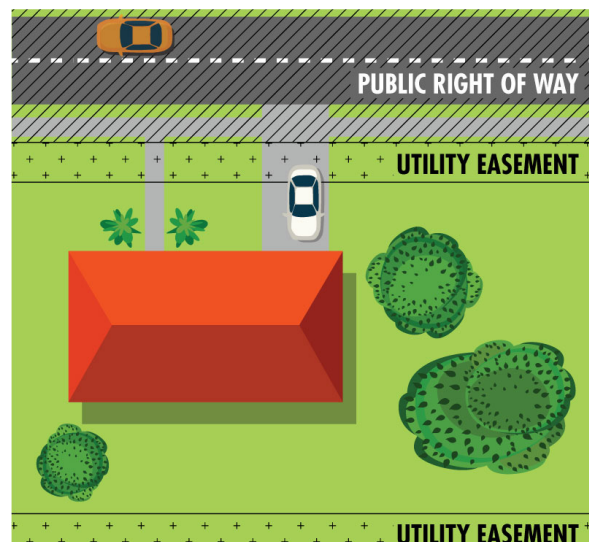


Theft Prevention Tips:

- Park in a garage or well-lit area.
- The main tools used for these thefts are reciprocating saws and grinders. Call the Police immediately if you see someone with these tools or near a vehicle that doesn't belong to them.
- Utilize surveillance cameras.

Who Owns the Area Between the Sidewalk and Street?

The area between the street and sidewalk is considered public right-of-way. The adjacent property owner is responsible for the maintenance of this area, including cutting the grass. However, there are many public amenities, including street signs and street trees, located within the public right-of-way. Any construction or physical disturbances within the public right-of-way, including sprinkler systems, invisible fences, the planting or removal of trees, and driveway replacements, require a permit from the Public Works Department. If a street does not contain a sidewalk, the public right-of-way is typically considered the area within 12 feet of the back of curb. Movable objects should not be kept in the public right-of-way, including basketball goals and decorative landscape boulders. If you have any questions regarding an object in the public right-of-way, please contact 636.537.4762.





Republic Services Proudly Continues Service to Chesterfield Residents!

A New Service Option is available for Yard Waste effective August 1, 2021:

- Residents who only need a one time or occasional YW service can simply call Customer Service to schedule a pickup and pay based on amount set out:
- Up to 4 bags/bundles: \$8.00 total
- 5-8 bags/bundles: \$12.00 total
- Each additional bag/bundle over 8: additional \$1.00 per bag; MAXIMUM of 20 bags/bundles
- Yard waste collection is still available as an optional service; collected weekly all year long. Material must be contained in the following containers: paper biodegradable bags, personal containers marked with a red "x," bundles tied with string/twine.
- Rate per month for optional YW subscription until August 1st, 2022 is \$15.34 per month; senior rate effective August 1, 2021 until August 1, 2022 is \$13.04 per month.

Trash & Recycling Collection:

- Trash collection is once per week and is limited to the 64-gallon or 95-gallon cart provided at no charge to the resident.
- Recycling is collected once per week; material is limited to the 64-gallon cart, provided at no charge to the resident.
- Rate for above services until August 1st, 2022 is \$14.58 per month; New reduced rate for Seniors, effective August 1st, 2021 until August 1st, 2022 is \$12.39 per month.

Bulk & Appliance Collection:

- Two bulk items can be set out per week at no charge.
- Appliance collection is once per week and is \$25 per appliance.
- Please contact customer service to schedule bulk or appliance collection 636.947.5959.

Invoicing:

- Residents are billed directly by Republic Services on a quarterly basis.
- Effective August 1, 2021, the senior discount will increase to 15%. Age 65 years or older are eligible for this discount; contact customer service to have the discount applied to your bill.

Communication with Republic Services:

- Toll free phone number: 636.947.5959.
- Manage your account from home or on the go. Visit [RepublicServices.com/Account](https://www.RepublicServices.com/Account) to set up your account or download the Republic Services app onto your mobile device.



We'll handle it from here.®

Republic Services
12976 St. Charles Rock Road
Bridgeton, MO 63044



ONLY place these items in the recycling cart:



**Do not bag recyclables.
No plastic bags in cart!**

For more information on recyclables, visit [RecyclingSimplified.com](https://www.RecyclingSimplified.com)

October is Chesterfield's Invasive Species Awareness Month

Join CCEAC members on October 23, at 8 a.m. at the Chesterfield Central Park to help eradicate invasive bush honeysuckle at the Park. Learning about invasive bush honeysuckle is part of this effort. Dress for the weather and bring work gloves and garden/branch pruners with your name on the pruners. Please RSVP to 636.812.9500.



Do You Know Any Chesterfield Veterans?

The Chesterfield Historic and Landmarks Preservation Committee would like your help in gathering information on veterans who were involved in Korea just before, during and after the 1950's Korean Conflict.

We would like service pictures of Chesterfield area veterans, their branch of service, rank and where they served. Any additional remembrances of their Korea experience would be welcome. We will copy and return any pictures. Please send them to:

Chesterfield Historic and Landmarks Preservation Committee (CHLPC)
Chesterfield City Hall
690 Chesterfield Parkway West
Chesterfield, MO 63017

We would like to honor these veterans with a summer exhibit in the new Heritage Museum on the second floor in Chesterfield Mall.



1950's Chesterfield area residents Harold Clevenger and Gentry Ferguson later stationed in Okinawa.



Ken Mertz in cold Korea in 1950's. Pictures shared by Jane Peanick.





October 11-17 is Earth Science Week

Theme: Water Today and for the Future

The purpose of this week is to promote a better understanding of Earth Science and to encourage better stewardship of our planet. Visit Rolla's Ed Clark Museum of Missouri Geology, or the following websites: The American Geosciences Institute, the Department of Natural Resources, or the U.S. Geological Survey. Learn more about geology, oceanography, meteorology/climatology and environmental science, which are all about the non-living aspects of these disciplines.

Then, appreciate the efforts made to explain our planet: our Earth is 4.6 billion years old; is a system of interacting rock, water, air and life; the Earth is continuously changing; and the Earth is the water planet. All of these disciplines help to advance understanding of our planet and the space surrounding it!

Did You Know?

October is Energy Awareness Month! You can participate by using window blinds to block direct sunlight to reduce cooling needs in summer. Open blinds on south-facing windows during the day to allow sunlight to naturally heat your rooms.



it



Reforestation Within Our City

Did you know that since 1990 a native 'tree replacement' effort has been going on? Each year at our annual Earth Day celebration, the CCEAC gives away free native trees for family yards from the Missouri Department of Conservation. These trees are to help replace those lost for natural reasons or to development, and to help those species of life that depend on the native trees. Please remember what trees do for quality life as we know it. Trees draw their power from the sun some 93 million miles away, and they use it to drive cycles of 6 fundamental elements: carbon, hydrogen, oxygen, nitrogen, phosphorus, and sulfur which together make up 95% of all living tissue in the biosphere! Trees depend on birds and pollinators to renew their lives through seed production and distribution. And, they hold the soil in place when it rains. Besides holding in carbon dioxide, they cleave it into carbon and oxygen, releasing oxygen into the air which all other animals need to breathe. Chesterfield is the 'City of Trees' so please help to replace lost trees in your own backyard to help quality nature grow.



Chesterfield Police Department Citizen Survey

The Chesterfield Police Department is committed to providing our citizens with the best service possible. This anonymous survey is a valuable tool that provides us with insight into how we are perceived, the quality of service we provide, and opportunities for improvement. Your participation in this survey process is vital. Please detach and return the survey to the Chesterfield Police Department, or complete online at <https://www.chesterfield.mo.us/police-citizens-survey.html>. Thank you in advance for your participation.

- How many times have you had contact with the Chesterfield Police Department in the past year?
 0 times 1-3 times 4-6 times 7 or more
- If you have had contact, what was it for?
 Crime Victim Witness Motor Vehicle Crash Traffic (violation, warning) House Watch Telephone Call Community Presentation Community Service Program Other

Please circle the number that best describes your rating of the following:

	<u>Excellent</u>	<u>Good</u>	<u>Poor</u>
3. The competence of the officer (s)	10 9 8	7 6 5 4	3 2 1 0
4. The demeanor of the officer (s)	10 9 8	7 6 5 4	3 2 1 0
5. The fairness of the officer (s)	10 9 8	7 6 5 4	3 2 1 0
6. The courtesy of the officer (s)	10 9 8	7 6 5 4	3 2 1 0
7. Traffic enforcement in Chesterfield	10 9 8	7 6 5 4	3 2 1 0
8. Police visibility in the community	10 9 8	7 6 5 4	3 2 1 0
9. Police visibility in your neighborhood	10 9 8	7 6 5 4	3 2 1 0
10. Overall services provided by the City of Chesterfield Police Department	10 9 8	7 6 5 4	3 2 1 0

Please rate the following by placing an X on the corresponding line:

- | | <u>Low</u> | <u>Moderate</u> | <u>High</u> | <u>No Opinion</u> |
|--|------------|-----------------|-------------|-------------------|
| 11. Your concern about becoming a victim of a lesser crime (vandalism, damage to property, theft) in Chesterfield | _____ | _____ | _____ | _____ |
| 12. Your concern about becoming a victim of a serious crime (burglary, robbery, sexual assault). | _____ | _____ | _____ | _____ |
| 13. How safe do you feel walking in your neighborhood at night?
<input type="checkbox"/> Very Safe <input type="checkbox"/> Somewhat Safe <input type="checkbox"/> Not Safe <input type="checkbox"/> No Opinion | | | | |
| 14. Residence? <input type="checkbox"/> Rent <input type="checkbox"/> Own <input type="checkbox"/> Business <input type="checkbox"/> Other _____ | | | | |
| 15. Please indicate whether the person completing this survey is: <input type="checkbox"/> Male <input type="checkbox"/> Female | | | | |
| 16. Age Group: <input type="checkbox"/> 10-18 <input type="checkbox"/> 18-25 <input type="checkbox"/> 25-35 <input type="checkbox"/> 35-45 <input type="checkbox"/> 45-55 <input type="checkbox"/> 55-65 <input type="checkbox"/> 65 and Over. | | | | |





THE CHESTERFIELD CITIZEN

17. Have you been the victim of a crime in the past 5 years? Yes No
18. Within the City of Chesterfield? Yes No
19. Did you report the crime to the Police Department? Yes No If not, why?

Please check the appropriate box to indicate what YOU feel should be the priorities of the Chesterfield Police Department?	Very High	High	Medium	Low	Very Low	No Opinion
A. Providing 24 hour patrol services to the community						
B. Discouraging crime in general						
C. Notifying citizens of potential criminal activity						
D. Responding to crimes in progress or that have just occurred						
E. Responding to and investigating property crimes (i.e. vandalism, theft, etc.)						
F. Preventative Burglary Patrol						
G. Discouraging the sale of alcohol to minors						
H. Discouraging the sale of tobacco to minors						
I. Traffic crash reduction through visible traffic enforcement						
J. Enforcement of parking regulations						
K. Enforcing drunk driving laws						
L. Enforcing dog and cat ordinances						
M. Mediating neighborhood/family disputes						
N. Arresting individuals who use drugs						
O. Providing drug/violence prevention education to elementary and junior high students						
P. Police presence in the schools						

20. Please indicate where you get information about what is taking place in the City of Chesterfield. (Choose all that apply)

- Chesterfield Newsletter Chesterfield Journal West News Radio Television News Sources
 School District Newsletter Other _____

21. So that we can provide better police service to the entire community, please help us identify your neighborhood. Please list the nearest intersection to your home or business.

COMMENTS:

**Please return this survey to the:
 Chesterfield Police Department
 690 Chesterfield Parkway West
 Chesterfield, MO 63017
 Attn. Officer Michael Ryffel
 636-537-3000**



2021 Chesterfield Valley Facts: *Then & Now*

Prior to the 1993 flood, there were 240 businesses in Chesterfield Valley. As of September 2012, there were approximately 840 licensed businesses, representing 40.4% of total licensed businesses in Chesterfield. As of July 2021, there are 909 licensed businesses, representing 43.9% of total licensed businesses in Chesterfield. Two hundred and fifty-nine of those Valley businesses are retail or restaurant operations.



Sixty-five Restaurants are located in the Valley with Chesterfield having 133 total restaurants.

Businesses in the Valley generate \$6.9 million in sales tax for the Parks Sales Tax Fund and Capital Improvement Fund for the City of Chesterfield and an estimated additional \$2 million in utility taxes and associated fees. Additionally, the Valley generates \$7.0 million in sales tax that goes in the County's sales tax pool that is distributed to cities based on their population. Chesterfield received approximately 8% of that back. Another \$13.2 million and \$29.5 million is generated and distributed directly to Saint Louis County and the State of Missouri, respectively.

As of 2018, the number of full-time employees is more than 14,458.* Prior to 1993, there was 3.1 million square feet of development within Chesterfield Valley. As of 2021, there is nearly 9 million square feet of development, with approximately 450,000 SF under construction with the addition of the outlet mall projects.

The assessed valuation of Chesterfield Valley dropped from \$24,958,233 on January 1, 1992 to \$18,487,580 on January 1, 1994. At the close of the TIF in 2007, the total assessed Valuation of the area was just over \$158 million. The assessed valuation of the Chesterfield Valley at the close of the TIF in 2007 was \$158,066,330. The most recent valuation of the valley provided by the County's Assessor's office is \$360,545,900. As of January 1, 2021, the City's entire assessed Valuation was \$2.27 billion.

In 1994, the City of Chesterfield created the Chesterfield Valley Tax Increment Financing (TIF) District with a spending cap of \$72.5 million. Because of the accelerated growth in the Chesterfield Valley, the TIF was retired 10 years early in late 2007. The TIF funded public infrastructure including levee improvements, road and highway improvements, storm water drainage improvements, and sanitary & water system improvements. The funding for the TIF was earmarked for the following public infrastructure:

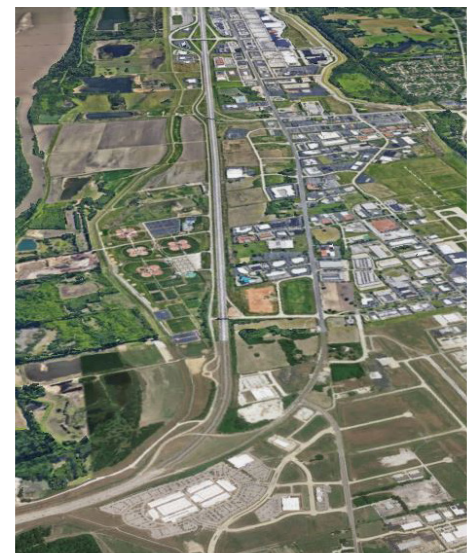
- \$21.27 million of levee improvements
- \$29.894 million of road and highway improvements
- \$9.77 million of storm water drainage improvements
- \$10.853 million of utility improvements (sanitary & water systems)
- \$720,000 in professional services

Because of the Valley's successful recovery, excess TIF revenues began to pass through to the underlying taxing districts in 2002. For example, in 2006 the Rockwood School District received \$566,125 and the Monarch Fire Protection District received \$133,294 as pass-through funds.

Following the retirement of the TIF, those districts were expected to receive \$6.6 million and \$1.49 million annually, respectively. Based on the 2020 assessed valuation, those districts received \$15.5 million and \$3.5 million annually, respectively.

In addition to the TIF funds, a partnership agreement with the Monarch-Chesterfield Levee District has allowed a significant number of acreage to be opened for development in the west end of the Chesterfield Valley with the placement of the water and sewer extensions.

Source: *2018 US Census – OnTheMap





CHESTERFIELD AQUATICS

Amended Pool Hours

There are only a few more weeks of summer! Come join us at the Chesterfield Family Aquatic Center (CFAC). Everyone is welcome!. Daily admission for residents is \$6.00 for a child under 18, while adults are \$7.00. Seniors that are residents (62+) are \$6.00. Non-residents daily admission is \$9.00. Everyone under the age of 2 is free.

August 23 - September 6
Monday-Thursday: Closed
Friday 4-7 p.m.

Saturday, Sunday & Holidays: 12:00 p.m. - 6:30 p.m. (subject to change/closure based on staffing availability).

Any changes or updates will be on our website, social media and hotline (636.537.4770).

Instagram: @ChesterfieldAquaticCenter
Facebook: @ChesterfieldFamilyAquaticCenter

First Responder Appreciation Day

We welcome all First Responders to come kick back and relax at the Chesterfield Family Aquatic Center and then visit Backstoppalooza over at the Chesterfield Amphitheater. All First Responders who show an ID will receive free entry with another paid admission.

Riverwalk Club

August 23 – September 4
Monday – Friday: 8:30 a.m. – 10 a.m.
Tuesday & Thursday: 4:30 a.m. – 6 p.m.
Saturday: 10:00 a.m. – 11:30 a.m.

Last day of pool season:
Labor Day
Monday, September 6: 12:00 p.m.-6:30 p.m.





Campfire Cooking 101

Join us for a night of trying different types of campfire food. Food will be provided. Bring your campfire chairs and enjoy a dinner by campfire.

Resident: \$25 Non-Resident: \$30

November 4

6:00 p.m. - 7:30 p.m.

Chesterfield Valley Athletic Complex A5

Register at www.chesterfield.mo.us.



Take A Hike

Come enjoy the great outdoors with your family on a guided hike through Chesterfield's beautiful parks. The hike will start with an education session on beginner hiking and end with a much-needed refreshment. Be sure to check your email before attending the hike.

September 25

Chesterfield Valley Athletic Complex

Big Muddy-

A5 Parking Lot

Time – 9 a.m.

FREE for all ages

Register at www.chesterfield.mo.us.



Cops and Bobbers

Grab your fishing poles and join your Chesterfield Police Department Police Officers fishing at Central Park. Police cars and officers will be available for families to take pictures and get to know your local officers. Fishing poles will be available for rent.

Saturday, September 16 from 6-7:30 p.m.

Central Park, All ages

\$5 per family

Register at www.chesterfield.mo.us.





COMMUNITY EVENTS



Trucks & Treats

Date: October 9 (Rain Date: October 16)
Location: Central Park Parking Lot
Time: 10-2 p.m.
FREE

Come climb up in the driver's seat and explore our big maintenance trucks, emergency vehicles, equipment, and more. This free event gives families and children the ability to explore and learn about rarely accessible vehicles and their variety of daily functions. Everyone is welcome to come in costume and participate in our fall festival activities. Be on the lookout for spooky treats.



Turkey Trot 5K/Fun Run

This year marks the 22nd Annual Turkey Trot 5K & Fun Run! This is a great way to spend time with family and exercise before the big meal, so you can really indulge! Start Thanksgiving Day the right way and sign up for the 5K or Kids Fun Run!
Thursday, November 25
Chesterfield Amphitheater
631 Veterans Place Drive

5K Run/Walk- 8:30 a.m.
Early Bird-\$20 through October 31
\$25 November 1-24
\$35 Race Day

Shirts guaranteed if registered by November 7. Awards given for top overall male, top overall female, and top three in each age group.

Kids Fun Run- 9:30 a.m.
\$10 through Race Day
Shirts are guaranteed if registered by November 7. Each participant will receive a medal. Please register at www.chesterfield.mo.us.





Candy Cane Hunt

Date: December 4 (Rain Date December 11)

Location: Central Park

Time: 4 p.m.

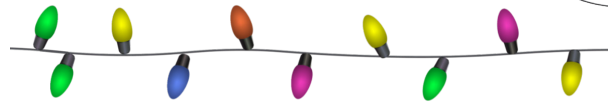
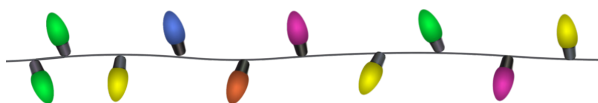
Ages: 2-12

Price: \$12

Don't miss out on the Candy Cane Hunt at its new location in Central Park. There will be candy canes, holiday characters, and fun! Hunt down all your candy canes for the holiday season. The hunt ends when all the candy canes are found.

Each age group will have their own areas for the hunt. A special holiday guest will be walking around to help candy cane hunters. After the Candy Cane Hunt, stay for crafts and the first Holiday Tree Lighting.

We will be accepting donations for Cardinal Glennon Children's hospital at the event. All items must be new and unwrapped to donate. Can't make it to the event? Drop them off at City Hall (690 Chesterfield Parkway West) or the Parks Admin Building (17891 N Outer 40 Road) until December 6. Register at www.chesterfield.mo.us.



THE CITY OF
CHESTERFIELD
PRESENTS:

1st Annual Holiday Tree Lighting



Holiday Tree Lighting

Save the Date!

December 4 the City of Chesterfield will be hosting its 1st Annual Holiday Tree Lighting. This event will be surrounded with festivities for all. Check the website, www.chesterfield.mo.us and social media, as details develop!





OLDER ADULT PROGRAMS

Pickleball Clinics

CVAC Pickleball Courts
17891 North Outer 40 Road
Chesterfield, MO 63005
\$10 Drop-In Fee (Cash only)

DAY CLINICS

9:00 a.m. - 10:30 a.m. : Beginner
10:30 a.m. - Noon: Intermediate

September 9, 23
October 7, 21

EVENING CLINICS

4:00 p.m. - 5:30 p.m. : Beginner
5:30 p.m. - 7 p.m. : Intermediate

September 21
October 19

Instructors from Callahan Pickleball Academy will lead the classes.
Equipment will be available for check out.
Registration not required, but preferred.
Email olderadults@chesterfield.mo.us or call 636.812.9500 before the clinic you wish to attend.

Open Pickleball play is available every day, dawn to dusk on our two outdoor permanent Pickleball Courts.



Pickleball League

Adult Pickleball League Levels 3.0-4.5
5-week league (including playoffs)
Games begin September 14.
Playoffs will be the last week. Games will be determined by wins/losses.
Location: Chesterfield Valley Athletic Complex Pickleball Courts
Cost per team: \$55 per team
Co-ed League.

Doubles Beginners:

Grab a partner and sign up for this outdoor pickleball league. League games will be on Tuesday mornings starting no earlier than 9 a.m. Pickleballs and racquets will be available if needed. Rules and regulations will be listed on website and emailed to teams.

Doubles Intermediate:

Grab a partner and sign up for this outdoor pickleball league. League games will be on Wednesday mornings starting no earlier than 9 a.m. Pickleballs and racquets will be available if needed. Rules and regulations will be listed on website and emailed to teams. two-match minimum each day.

Doubles Advance:

Grab a partner and sign up for this outdoor pickleball league. League games will be on Thursday mornings starting no earlier than 9 a.m. Pickleballs and racquets will be available if needed. Rules and regulations will be listed on website and emailed to teams. two-match minimum each day.

Register online at:
www.chesterfield.mo.us

Older Adult Ice Cream Social

The older adult ice cream social will be held from 2 p.m. - 4 p.m on August 20. The event is free and doesn't require reservation. The social will take place at Central Park Pavilion. There will be an ice cream truck from 2-3 p.m. and music from 2 p.m. - 4 p.m.. This event is sponsored by: Brookdale Senior Living.



OLDER ADULT PROGRAMS



Yoga

The City of Chesterfield and Off Beat Yoga are partnering for Yoga in the Park at Central Park. Thursdays we offer Senior Yoga in the Park and then on Saturdays we have all levels of yoga in the park. Sessions are Thursdays - 9 a.m. and Saturdays - 9 a.m.. Each session is four weeks long, and sessions continue all through summer until the end of September. For more information and to register for the next session, visit: <https://offbeat-yoga.com/2021/01/26/outdoor-yoga/>.



OFFBEAT
— Y O G A —



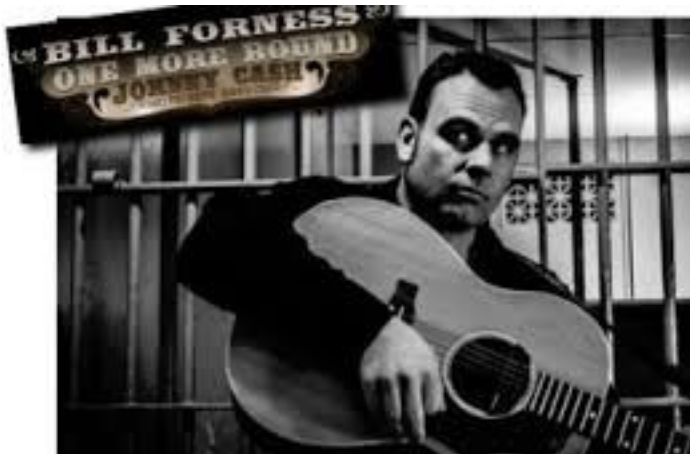
BBQ BASH

Wednesday, September 29
FREE - 11 a.m.
East Pavilion at Central Park
16365 Lydia Hill Drive

Entertainment: Bill Forness of One More Round: A Tribute to Johnny Cash. This program is provided to you by Garden View Care Center.

This event will be limited to 75 people.

Please RSVP to olderadults@chesterfield.mo.us or 636.812.9500



Bingo

- | | |
|--------------|--|
| August 25 | Sponsored by Gardenview Care Center |
| September 8 | Sponsored by Delmar Gardens |
| September 22 | Sponsored by Mid America Law Practice, LLC |
| October 13 | Sponsored by Gambrill Gardens |
| October 27 | Sponsored by Garden View Care Center |
| November 3 | Sponsored by The Sheridan |
| November 17 | Sponsored by Team Ted, Trusted Senior Advisors |
| December 1 | Sponsored by Team Ted, Trusted Senior Advisors |
| December 15 | Sponsored by Brookdale Senior Living |



11 a.m. – 1 p.m.
Chesterfield Mall Food Court
Lunch is provided
\$5 at the door

Must RSVP as space will be limited. Please call or email olderadults@chesterfield.mo.us or 636.812.9500.





OLDER ADULT PROGRAMS

Golden Lunch Brunch

Wednesday, September 15
11:30 a.m.
Walnut Grill
17392 Chesterfield Airport Road

Wednesday, October 20
11:30 a.m.
Scarecrows
101 Chesterfield Towne Centre

Wednesday, November 10
11:30 a.m.
Yayas Euro Bistro
15601 Olive Boulevard

There is a 20 person limit for all dates. The Lunch Bunch program is an opportunity to enjoy lunch with your favorite friends and to make new friends. It is a fun way to try different restaurants and enjoy the company of others.

Each person is responsible for the cost of their own food and beverages. Transportation is on your own.

Reservations are required. Please RSVP at olderadults@chesterfield.mo.us or 636.812.9500



LOAP Meetings

(Lafayette Older Adult Program)
2nd and 4th Mondays, September-May
Ballwin Golf Course
10 a.m. - 1:30 p.m.
\$2/person



LOAP offers those 55+ the opportunity to make new friends, hear great speakers, be entertained by some great musicians, and play Bingo.

Open to all residents in West County.
No registration needed.



OLDER ADULT PROGRAMS



Senior Education Series

Tuesdays, 10-11 a.m.
City Hall
FREE

August 17: Living Choices in Senior Living
September 21: Senior Nutrition
October 19: Medical Equipment
November 16: Slips and falls

Please RSVP to olderadults@chesterfield.mo.us
or 636.812.9500.



Senior Sampler

October 14
10:00 a.m. - 12:00 p.m.
Central Park Parking Lot
16365 Lydia Hill Dr.
FREE

Come enjoy a Trunk-or-Treat informational expo for seniors! Local businesses will be on-site for attendees to walk around and receive information (and goodies).

Please RSVP to olderadults@chesterfield.mo.us
or 636.812.9500.



Senior Panel Discussion

Tuesdays, 10-11 a.m.
City Hall
FREE

September 7: Understanding Senior Living Community Options
October 5: Estate & Financial Planning Made Easy
November 2: Avoiding the Hospital Nightmare
December 7: Communicating with Medical Professionals

Come join the panel as we discuss various topics each month. Brought to you by Team Ted, trusted senior advisors.

Please RSVP to olderadults@chesterfield.mo.us or 636.812.9500.

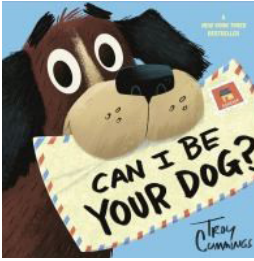




RECREATION PROGRAMS

Storybook Walk

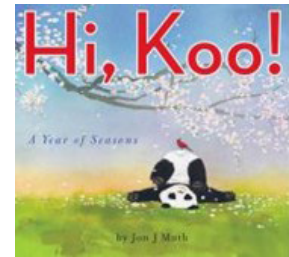
The Storybook Walk at Central Park provides an outdoor education adventure through Central Park. This new addition to Central Park is a great way to engage families in health, literacy and environmental awareness. The walk consists of 18 stations consisting of two pages out of a child's book handpicked by staff at the St. Louis County Library. The route begins at the front of the Central Park playground and wraps around the lake. After you complete your walk, be sure to stop by the St. Louis County Library to check out other fun and exciting books. Every two months there will be a new book inside the Storybook Walk.



September-October

Storybook Walk with Craft Night

Bring the entire family out to Central Park to enjoy an evening together. You will create a craft associated with the new book inside the Storybook Walk at Central Park. Once you complete the craft, go for a walk to read with the family. Resident: \$5 Non-Resident: \$7 September 7, November 9, January 12, Central Park, 6-7 p.m.. All ages welcome.



November-December



Family Bingo

October 15- Theme- Spooky Time Bingo
November 12- Honor our Heroes
January 14 – Glow in the Dark
6:30-8:30 p.m. in the Multipurpose Room
17891 N. Outer 40 Road

Individual pricing: resident is \$9, non-resident is \$11. Family of 4: resident is \$35, non-resident is \$42. Parks and Administration Building

Get the family out of the house this winter and play some family night themed bingo with us! Bring your own food and drinks- light refreshments will be provided. There will be prizes for bingo winners!

Community CPR/AED Training

Dates: October 20, November 10, December 8 at 6:30-8:30 p.m.

Gain your Community CPR and AED Certification or just come for the useful information. Please note: For Certification you must be able to kneel on knees and get up in a timely manner. Parks, Recreation and Arts Building 17891 N Outer 40 Road.

Price: Certification: \$9 Informational: \$6.





K9 Splash

Date: Tuesday, September 7
Chesterfield Family Aquatic Center
Time: 4:30 - 6:30 p.m.
Price: \$7 per dog. \$3 per person, under 2 free.
Chesterfield has teamed up Dirks Fund Golden Retriever Rescue Group for the Annual K-9 splash. For each dog you must bring your dog's most recent vaccination records in order to participate. (No puppies under 4 months) All dogs need to be neutered or spayed.



Yappy Hour

Bring your fellow K9 friend out to the dog park for some drinks and light appetizers. Treats from Treats Unleashed will be provided for our K9 friends. Register by emailing recreation@chesterfield.mo.us. Dog park members only. Eberwein Dog Park, September 24 at 4:30 - 6:30 p.m.

Yappy Howl-O-Ween

Dress up your K9 friends and bring them to the dog park for pictures and treats. Register by emailing recreation@chesterfield.mo.us. Dog park members only. Eberwein Dog Park, October 8 at 4:30 - 6:30 p.m.



Santa Paws Celebration

Bring your K9 friends and take pictures with Santa. Register by emailing recreation@chesterfield.mo.us. Dog park members only. Eberwein Dog Park, December 3, 4:30-6:30 p.m.





RECREATION PROGRAMS • • • • •

Spikeball Tournament



Spikeball is a combination of volleyball and four square in a competitive format based around four players, a ball, and a small net. Come try your hand in our Spikeball tournament at the Chesterfield Valley Athletic Complex-Sand Volleyball Courts on September 25. If you are looking for casual outdoor fun and or a very competitive sport, then Spikeball is the sport for you. Adult and youth tournament.

Teams of four (two playing at a time)
Cost per team member:
Resident \$30, non-resident \$36
10:00-6:00 p.m.
Age Groups: 12-14, 15-18, and adult
Double elimination
Register at www.chesterfield.mo.us.

Youth Archery 1

This is a beginner's level archery class that will teach kids the basics of archery such as, bow mechanics, dominant eye and proper shooting technique.

Chesterfield Valley Athletic Complex
Monday, August 30 at 6-7:30 p.m.
Tuesday, September 21 at 6-7:30 p.m.
Saturday, September 25 at 10-11:30 a.m.
Thursday, September 30 at 6-7:30 p.m.
Resident: \$15 Non-Resident: \$18
Register at www.chesterfield.mo.us.



Youth Archery 2

This course is designed to strengthen the skills learned in Archery 1 and in further, target practice plus movement. Prerequisite: Youth Archery 1 must be completed in 2021 before enrolling.

Chesterfield Valley Athletic Complex
Saturday, September 25
12 p.m.-1:30 p.m.
Tuesday, October 5
6 p.m.-7:30 p.m.
Wednesday, October 13
6 p.m.-7:30 p.m.
Resident: \$15 Non-Resident: \$18
Register at www.chesterfield.mo.us.

Nerf Battle

Battle your way to victory – every player for themselves in our Outdoor Nerf Battle event. Use our variety of obstacles to your advantage to claim victory. Bring your own Nerf Blaster – nerf darts only! Battles will be refereed. Age groups will be sectioned off into different areas. Everyone must wear eye protection. Nerf darts only, NO BALLS/NO Rapid Fire blasters. Rainout date November 20.

Prizes will be given out for Overall Best Sportsmanship and Battle winners determined by our Referees.
Date: November 13
CVAC A1/A2 fields
Time: 10-12:00 p.m.
Price: \$12 per battler
Register at www.chesterfield.mo.us.





Fall Youth Soccer

Chesterfield Youth Soccer League will give area youth the opportunity to learn and develop soccer skills! This 7-week league has games on Saturdays at the Chesterfield Valley Athletic Complex. Practices are held once a week at the discretion of the coach and parents. Participants will receive a uniform shirt, socks and a soccer ball. Participants will register individually and will have the ability to request a coach and/or teammate! Head coaches will receive their child's registration free!
 Co-ed divisions: 3/4, 5/6, 7/8, 9/10, 11/12
 Saturdays, September 11-October 23
 Registration deadline: August 21.
 To register, scan the QR code.



Sports Gear Drive

This fall we are partnering with St. Louis Sports Outreach to collect gently used sports equipment. Check our Facebook page for details!



CORE Soccer

CORE Soccer
 First Touch PlayTime (ages 2-3yrs)
 First Touch (ages 4-5 yrs)
 Ball Skills (ages 6-14yrs)
 Goalkeeper (ages 6-14yrs)

Dates:

Fall Session #1 - August 8-August 29
 Fall Session #2 - September 12-October 3
 Fall Session #3 - October 10-October 31
 Times: Sundays at 12:00 p.m.
 Location: Chesterfield Valley Athletic Complex
 Register at www.chesterfield.mo.us.

Chesterfield Valley Athletic Complex (CVAC) Birthday Party Packages

Come celebrate at the Chesterfield Valley Athletic Complex! The CVAC Party Package is a perfect fit to host your child's next party. This package includes:

- Two hours of rental time for the Miracle Field or 1 Sand Volleyball Court
- Exclusive use of a pavilion (with access to electric & conveniently located to bathrooms, playground & concession stand)
- Four pizzas with an option to order more
- Unlimited number of guests

\$100 for residents, \$150 for non-residents (dates and times are subject to availability). To reserve your party, visit our website, fill out the application reservation sheet and submit! For more information, call us at 636.812.9500 or athleticcomplex@chesterfield.mo.us.





CHESTERFIELD TRAILS

Central Park Trail



The Central Park Trail is a 1.24 mile loop trail around Central Park Lake. The trail passes Chesterfield Amphitheater, the Central Park playground, and many pieces of public art. You can veer off the trail a bit to visit Veterans Honor Park, The Awakening, one of our river walks, or the Chesterfield Family Aquatic Center pool. Parking for trail users is available at the parking lot for the Chesterfield Family Aquatic Center.



Photo Taken By: Jennifer McLaughlin

Eberwein Park Trail



Eberwein Park consists of one 0.82 mile trail that can be broken into two different loops. The Eberwein Park loop begins near the barn and the parking lot, circles down in front of the dog park entrance and around the back of the dog park and near the commemorative benches. The Open Play loop begins just south of the Community Garden and circles the open field on the south end of the park and is currently under renovation. And of course the full trail connects the both ends of the park.



Rivers Edge Trail



River's Edge Park features a 2+ mile crushed limestone walking trail with breathtaking scenery and wonderful wildlife. The park is located on the north side of the levee near The District. Designated parking is in the shared parking lot with The District.





Monarch Levee Trail

The Monarch-Chesterfield Levee Trail is an 11-mile long trail that encompasses the majority of commercial, industrial and recreational land uses in Chesterfield Valley. The new bridge path, completed in June 2016, connects the Monarch Levee Trail in St. Louis County to the Katy Trail in St. Charles County. The Monarch Chesterfield Levee provides an exceptional trail riding experience for over 250 miles.



Riparian Trail



The Riparian Trail is a half-mile, crushed stone and boardwalk trail that meanders through the woods and along Chesterfield Creek. Get up close with wildlife and nature in the heart of the City! The trail is part of a five-phase plan to construct a pedestrian/bike path which begins near the Chesterfield Family Aquatic Center and will extend to Old Chesterfield Road and eventually connecting to the Monarch-Chesterfield Levee Trail. Parking for trail users is available at the parking lot for the Chesterfield Family Aquatic Center.



W.F. Dierberg Meditation Park Walking Paths

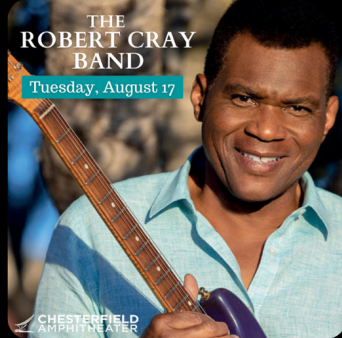
The W.F. Dierberg Meditation Park is a 2-acre park that features walking paths, open green space, park benches, a butterfly garden and a fountain.





CHESTERFIELD AMPHITHEATER

AUG
17



Steve Litman Presents:

THE ROBERT CRAY BAND

6:00pm ★ US \$39.50-\$59.50

AUG
21



Chesterfield Amphitheater

BILLY THE KID AT BACKSTOPPALOOZA

6:00pm ★ FREE

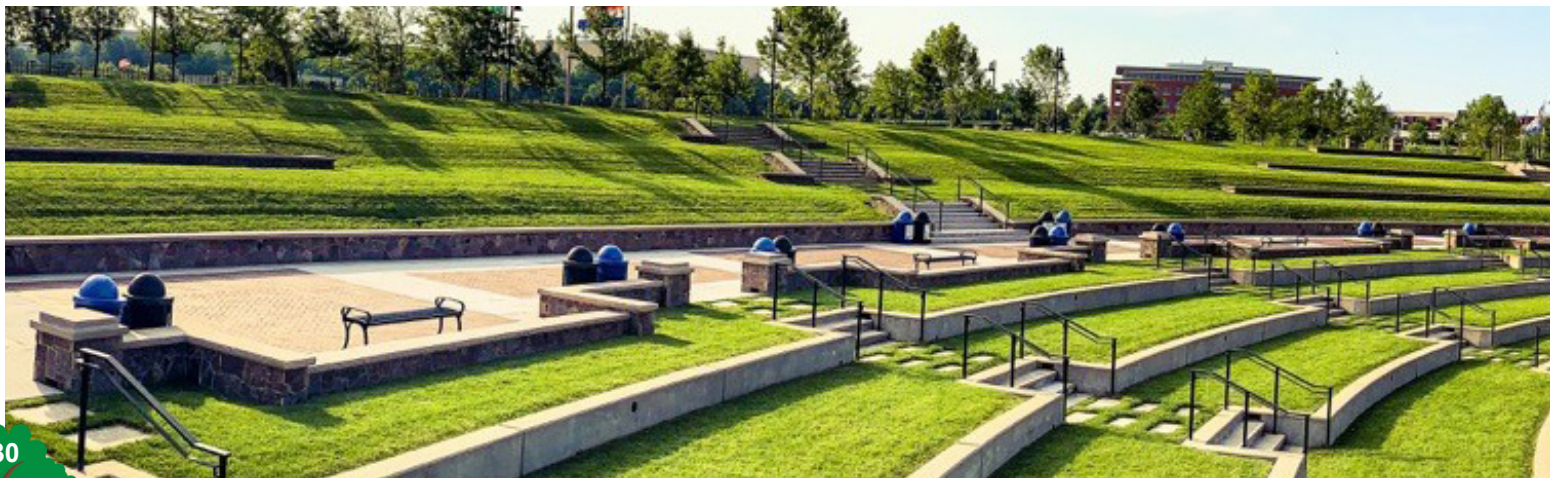
AUG
22



Chesterfield Amphitheater

BLUES TRAVELER & JJ GREY & MOFRO

7:00pm ★ US \$30-\$60



CHESTERFIELD AMPHITHEATER



AUG
28



Chesterfield Amphitheater
**DOGS OF SOCIETY-
THE ULTIMATE ELTON
ROCK TRIBUTE**

6:30pm ★ US \$15-\$25

AUG
27



Chesterfield Amphitheater
TRACY BYRD

7:00pm ★ US \$20-\$60

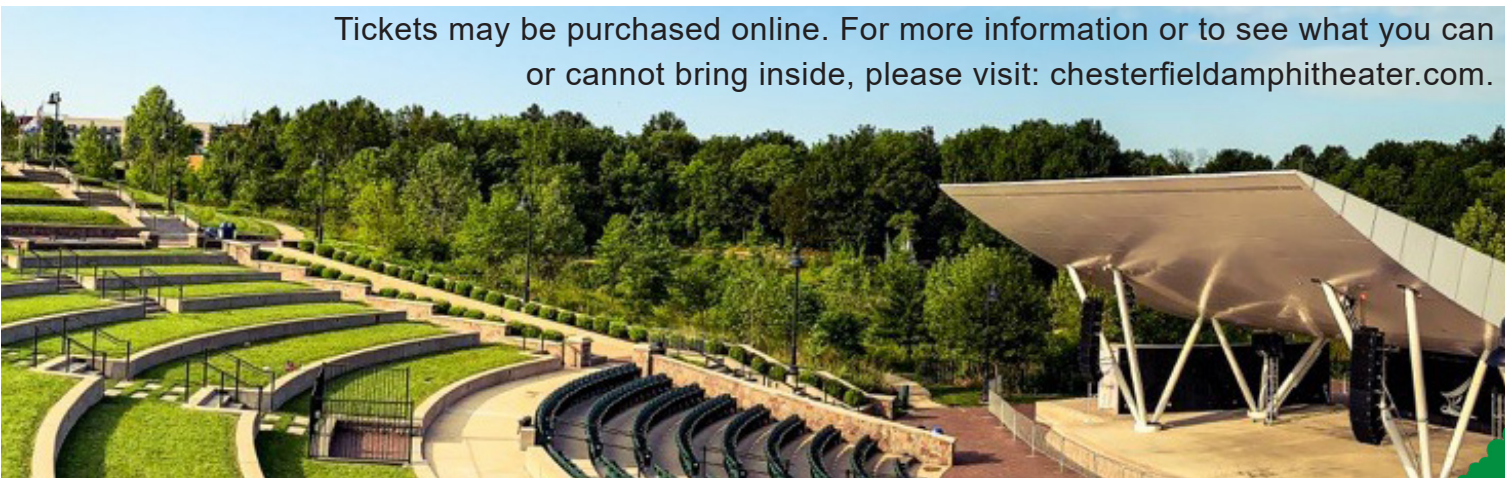
SEPT
25



Chesterfield Amphitheater
SILVER BULLET STL
***RESCHEDULED FROM
JUNE 26TH**

6:30pm ★ FREE

Tickets may be purchased online. For more information or to see what you can or cannot bring inside, please visit: chesterfieldamphitheater.com.





CHESTERFIELD CITIZEN

A QUARTERLY PUBLICATION OF THE CITY OF CHESTERFIELD

PRSRT STD
U.S. POSTAGE
PAID
ST. LOUIS, MO
PERMIT NO. 495



This newsletter is printed on recycled paper.

Dated Material: Please deliver by August 2, 2021



25th Annual Recycling Event
Drive-thru Saturday, November 6 at 9 a.m. - 12 p.m.
Join neighbors and friends Saturday to recycle &
e-cycle at the Chesterfield Mall's back parking lot behind Macy's.

Check our website for vendors: www.chesterfield.mo.us